

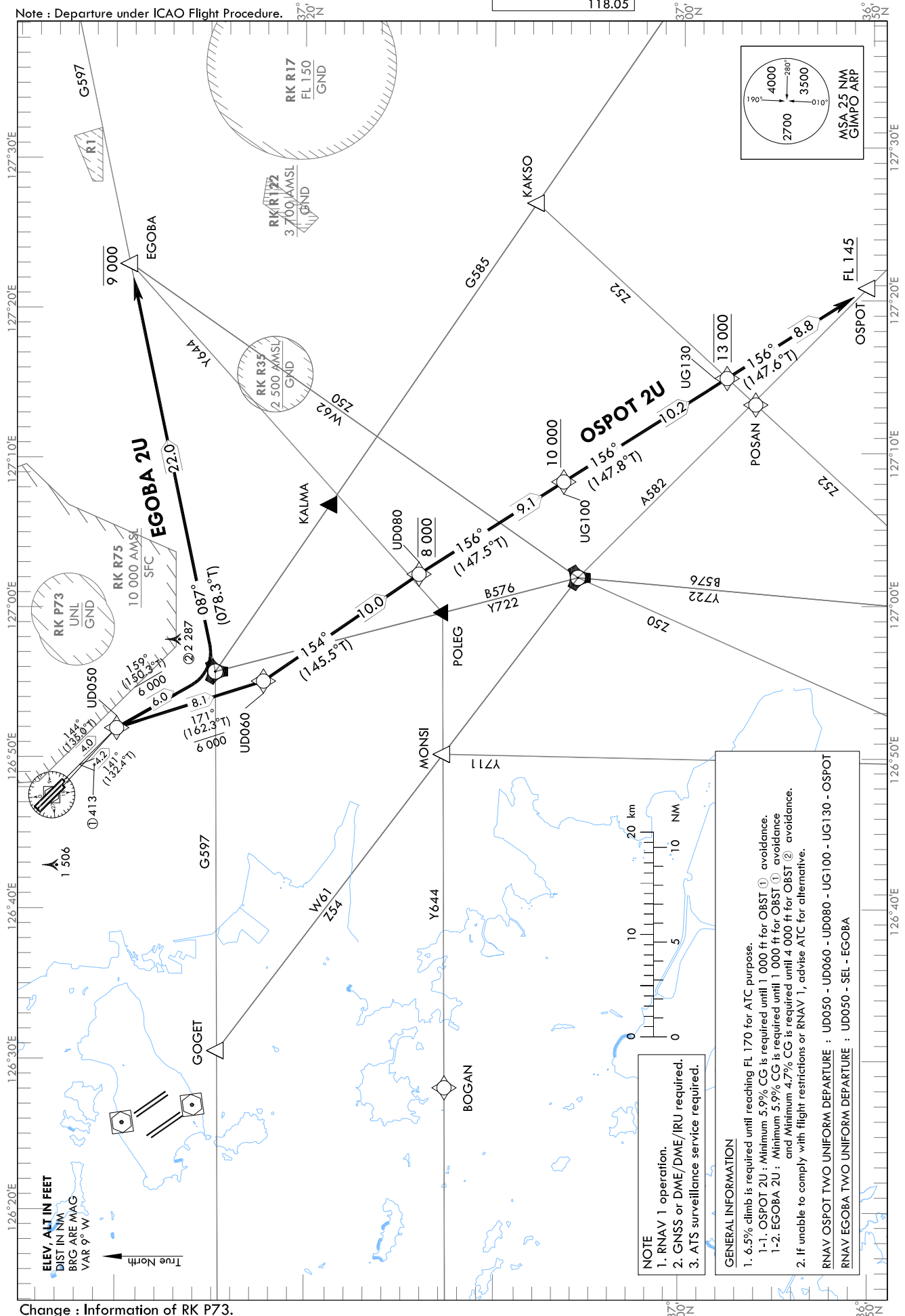
STANDARD DEPARTURE CHART
INSTRUMENT (SID) - ICAO

TRANSITION ALT 14 000
TRANSITION LVL FL 140

SEOUL	DEP	125.15
		121.4
		124.8
GIMPO	TWR	118.1
		118.05

SEOUL/Gimpo Intl(RKSS)
RWY 14L/R
RNAV OSPOT 2U, RNAV EGOBA 2U

Note : Departure under ICAO Flight Procedure.



Change : Information of RK P73.

NOTE
1. RNAV 1 operation.
2. GNSS or DME/DME/IRU required.
3. ATS surveillance service required.

GENERAL INFORMATION
1. 6.5% climb is required until reaching FL 170 for ATC purpose.
1-1. OSPOT 2U : Minimum 5.9% CG is required until 1 000 ft for OBST ① avoidance.
1-2. EGOBA 2U : Minimum 5.9% CG is required until 1 000 ft for OBST ① avoidance and Minimum 4.7% CG is required until 4 000 ft for OBST ② avoidance.
2. If unable to comply with flight restrictions or RNAV 1, advise ATC for alternative.
RNAV OSPOT TWO UNIFORM DEPARTURE : UD050 - UD060 - UD080 - UG100 - UG130 - OSPOT
RNAV EGOBA TWO UNIFORM DEPARTURE : UD050 - SEL - EGOBA

SEOUL/Gimpo Intl(RKSS)
RWY 14L/R
RNAV OSPOT 2U, RNAV EGOBA 2U

AERONAUTICAL DATA TABULATION

Standard Instrument Departure Procedure Coding Tables

RNAV OSPOT 2U

Serial Number	Path Descriptor	Waypoint Identifier	Fly-over	Course/Track °M(°T)	Distance (NM)	Turn direction	Altitude (ft)	Speed (kt)	Coordinates	VPA/RDH	Navigation specification	Remarks
001	CF	UD050	-	14L-144(135.0) 14R-141(132.4)	14L-4.0 14R-4.2	R	-	-	37°30'01.9"N 126°51'58.7"E	-	RNAV 1	-
002	TF	UD060	-	171 (162.3)	8.1	-	-6 000	-	37°22'16.6"N 126°55'04.6"E	-	RNAV 1	-
003	TF	UD080	-	154 (145.5)	10.0	-	@8 000	-	37°14'03.3"N 127°02'08.6"E	-	RNAV 1	-
004	TF	UG100	-	156 (147.5)	9.1	-	+10 000	-	37°06'24.1"N 127°08'13.9"E	-	RNAV 1	-
005	TF	UG130	-	156 (147.8)	10.2	-	@13 000	-	36°57'45.7"N 127°15'01.2"E	-	RNAV 1	-
006	TF	OSPOT	-	156 (147.6)	8.8	-	+FL 145	-	36°50'18.1"N 127°20'54.9"E	-	RNAV 1	-

RNAV EGOBA 2U

Serial Number	Path Descriptor	Waypoint Identifier	Fly-over	Course/Track °M(°T)	Distance (NM)	Turn direction	Altitude (ft)	Speed (kt)	Coordinates	VPA/RDH	Navigation specification	Remarks
001	CF	UD050	-	14L-144(135.0) 14R-141(132.4)	14L-4.0 14R-4.2	R	-	-	37°30'01.9"N 126°51'58.7"E	-	RNAV 1	-
002	TF	SEL	-	159 (150.3)	6.0	-	-6 000	-	37°24'49.0"N 126°55'42.1"E	-	RNAV 1	-
003	TF	EGOBA	-	087 (078.3)	22.0	-	-9 000	-	37°29'14.7"N 127°22'45.9"E	-	RNAV 1	-

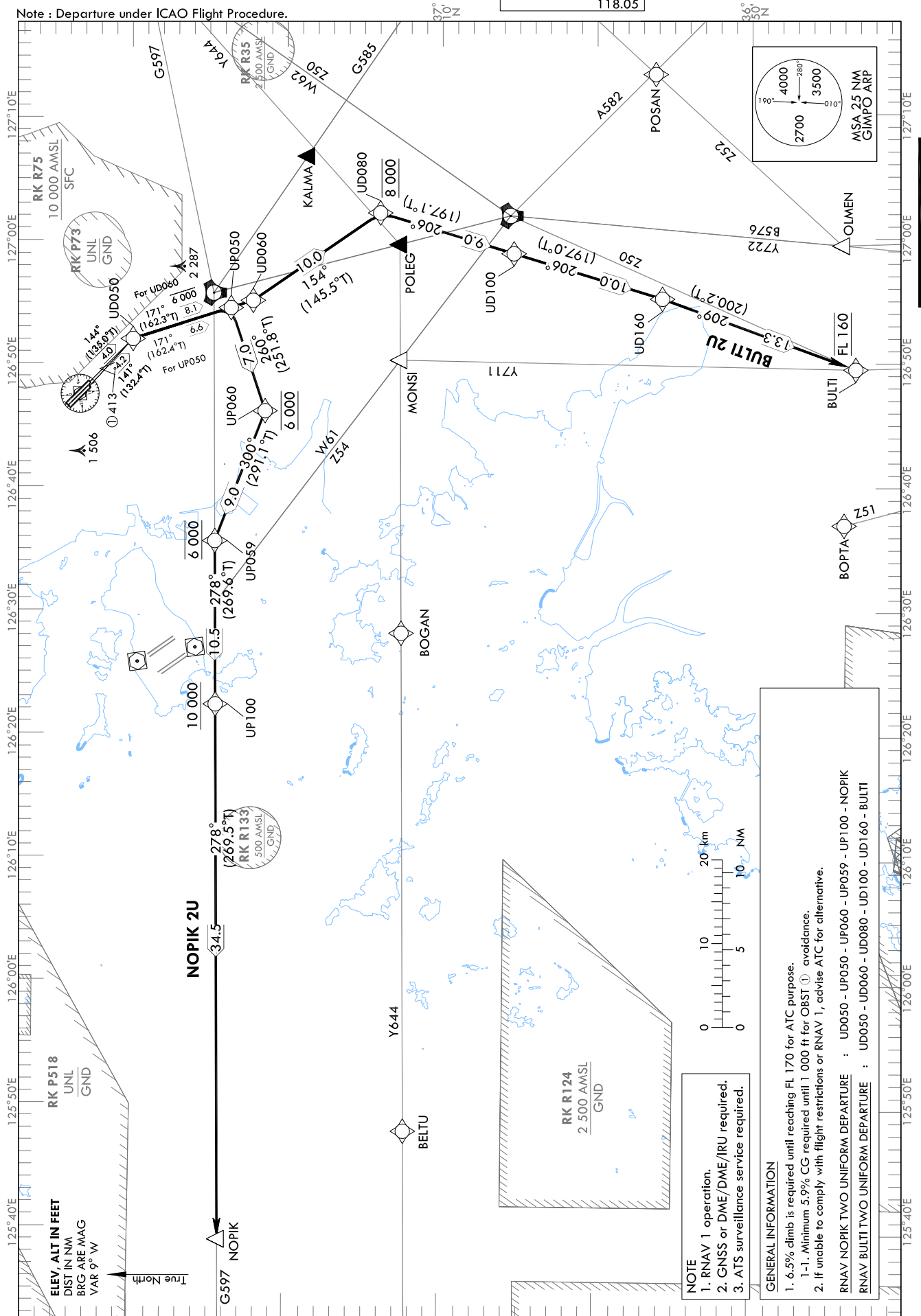
STANDARD DEPARTURE CHART
INSTRUMENT (SID) - ICAO

TRANSITION ALT 14 000
TRANSITION LVL FL 140

SEOUL DEP	125.15
	121.4
	124.8
GIMPO TWR	118.1
	118.05

SEOUL/Gimpo Intl(RKSS)
RWY 14L/R
RNAV NOPIK 2U, RNAV BULTI 2U

Note : Departure under ICAO Flight Procedure.



Change : Information of RK P73.

NOTE
1. RNAV 1 operation.
2. GNSS or DME/DME/IRU required.
3. ATS surveillance service required.

GENERAL INFORMATION

- 6.5% climb is required until reaching FL 170 for ATC purpose.
- 1-1. Minimum 5.9% CG required until 1 000 ft for OBST avoidance.
- If unable to comply with flight restrictions or RNAV 1, advise ATC for alternative.

RNAV NOPIK TWO UNIFORM DEPARTURE : UD050 - UP050 - UP060 - UD080 - UD100 - UD160 - BULTI
RNAV BULTI TWO UNIFORM DEPARTURE : UD050 - UD060 - UD080 - UD100 - UD160 - BULTI

SEOUL/Gimpo Intl(RKSS)
RWY 14L/R
RNAV NOPIK 2U, RNAV BULTI 2U

AERONAUTICAL DATA TABULATION

Standard Instrument Departure Procedure Coding Tables

RNAV NOPIK 2U

Serial Number	Path Descriptor	Waypoint Identifier	Fly-over	Course/Track °M(°T)	Distance (NM)	Turn direction	Altitude (ft)	Speed (kt)	Coordinates	VPA/RDH	Navigation specification	Remarks
001	CF	UD050	-	14L-144(135.0) 14R-141(132.4)	14L-4.0 14R-4.2	R	-	-	37°30'01.9"N 126°51'58.7"E	-	RNAV 1	-
002	TF	UP050	-	171 (162.4)	6.6	-	-	-	37°23'42.2"N 126°54'29.3"E	-	RNAV 1	-
003	TF	UP060	-	260 (251.8)	7.0	-	@6 000	-	37°21'30.5"N 126°46'08.9"E	-	RNAV 1	-
004	TF	UP059	-	300 (291.1)	9.0	-	@6 000	-	37°24'43.8"N 126°35'37.7"E	-	RNAV 1	-
005	TF	UP100	-	278 (269.6)	10.5	-	+10 000	-	37°24'38.7"N 126°22'23.8"E	-	RNAV 1	-
006	TF	NOPIK	-	278 (269.5)	34.5	-	-	-	37°24'12.0"N 125°39'05.0"E	-	RNAV 1	-

RNAV BULTI 2U

Serial Number	Path Descriptor	Waypoint Identifier	Fly-over	Course/Track °M(°T)	Distance (NM)	Turn direction	Altitude (ft)	Speed (kt)	Coordinates	VPA/RDH	Navigation specification	Remarks
001	CF	UD050	-	14L-144(135.0) 14R-141(132.4)	14L-4.0 14R-4.2	R	-	-	37°30'01.9"N 126°51'58.7"E	-	RNAV 1	-
002	TF	UD060	-	171 (162.3)	8.1	-	-6 000	-	37°22'16.6"N 126°55'04.6"E	-	RNAV 1	-
003	TF	UD080	-	154 (145.5)	10.0	-	@8 000	-	37°14'03.3"N 127°02'08.6"E	-	RNAV 1	-
004	TF	UD100	-	206 (197.1)	9.0	-	-	-	37°05'26.4"N 126°58'50.5"E	-	RNAV 1	-
005	TF	UD160	-	206 (197.0)	10.0	-	-	-	36°55'51.6"N 126°55'11.3"E	-	RNAV 1	-
006	TF	BULTI	-	209 (200.2)	13.3	-	@FL 160	-	36°43'22.3"N 126°49'29.7"E	-	RNAV 1	-

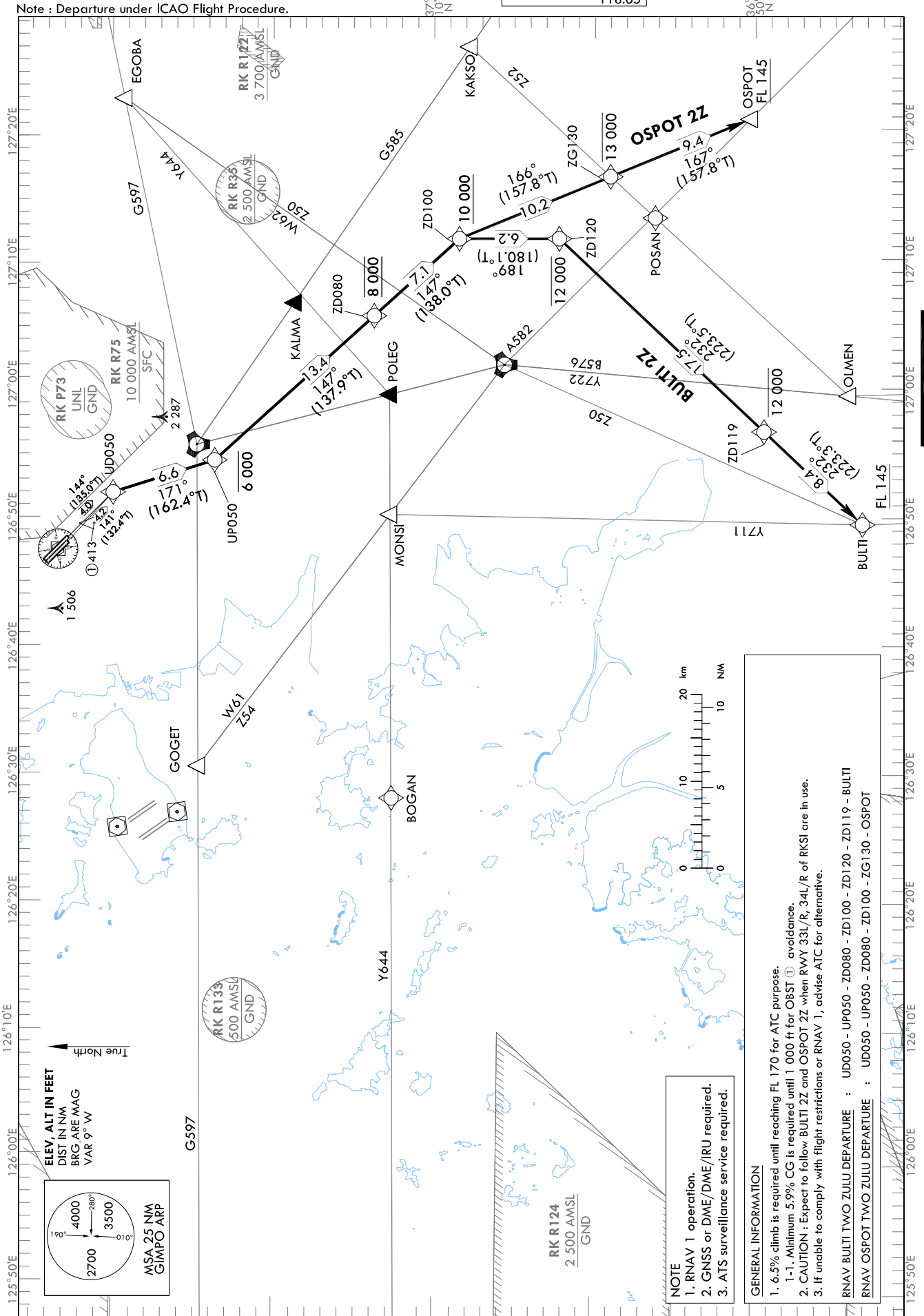
STANDARD DEPARTURE CHART
INSTRUMENT (SID) - ICAO

TRANSITION ALT 14 000
TRANSITION LVL FL 140

SEOUL DEP	125.15
	121.4
	124.8
GIMPO TWR	118.1
	118.05

SEOUL/Gimpo Intl(RKSS)
RWY 14L/R
RNAV BULTI 2Z, RNAV OSPOT 2Z

Note : Departure under ICAO Flight Procedure.



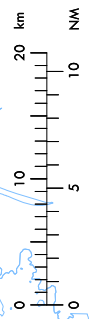
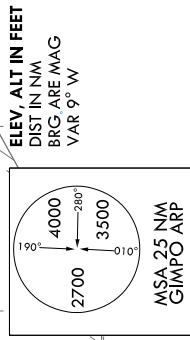
Change : Information of RK P73.

NOTE
1. RNAV 1 operation.
2. GNSS or DME/DME/IRU required.
3. ATS surveillance service required.

GENERAL INFORMATION

- 6.5% climb is required until reaching FL 170 for ATC purpose.
 - 1-1. Minimum 5.9% CG is required until 1 000 ft for OBST ① avoidance.
- CAUTION : Expect to follow BULTI 2Z and OSPOT 2Z when RWY 33L/R, 34L/R of RKSI are in use.
- If unable to comply with flight restrictions or RNAV 1, advise ATC for alternative.

RNAV BULTI TWO ZULU DEPARTURE : UD050 - UP050 - ZD080 - ZD100 - ZD120 - ZD119 - BULTI
RNAV OSPOT TWO ZULU DEPARTURE : UD050 - UP050 - ZD080 - ZD100 - ZG130 - OSPOT



SEOUL/Gimpo Intl(RKSS)
RWY 14L/R
RNAV BULTI 2Z, RNAV OSPOT 2Z

AERONAUTICAL DATA TABULATION

Standard Instrument Departure Procedure Coding Tables

RNAV BULTI 2Z

Serial Number	Path Descriptor	Waypoint Identifier	Fly-over	Course/Track °M(°T)	Distance (NM)	Turn direction	Altitude (ft)	Speed (kt)	Coordinates	VPA/RDH	Navigation specification	Remarks
001	CF	UD050	-	14L-144(135.0) 14R-141(132.4)	1.4L-4.0 1.4R-4.2	R	-	-	37°30'01.9"N 126°51'58.7"E	-	RNAV 1	-
002	TF	UP050	-	171 (162.4)	6.6	-	-6 000	-	37°23'42.2"N 126°54'29.3"E	-	RNAV 1	-
003	TF	ZD080	-	147 (137.9)	13.4	-	@8 000	-	37°13'46.2"N 127°05'43.1"E	-	RNAV 1	-
004	TF	ZD100	-	147 (138.0)	7.1	-	+10 000	-	37°08'27.2"N 127°11'42.1"E	-	RNAV 1	-
005	TF	ZD120	-	189 (180.1)	6.2	-	-12 000	-	37°02'14.2"N 127°11'41.1"E	-	RNAV 1	-
006	TF	ZD119	-	232 (223.5)	17.5	-	-12 000	-	36°49'30.3"N 126°56'40.8"E	-	RNAV 1	-
007	TF	BULTI	-	232 (223.3)	8.4	-	+FL 145	-	36°43'22.3"N 126°49'29.7"E	-	RNAV 1	-

RNAV OSPOT 2Z

Serial Number	Path Descriptor	Waypoint Identifier	Fly-over	Course/Track °M(°T)	Distance (NM)	Turn direction	Altitude (ft)	Speed (kt)	Coordinates	VPA/RDH	Navigation specification	Remarks
001	CF	UD050	-	14L-144(135.0) 14R-141(132.4)	1.4L-4.0 1.4R-4.2	R	-	-	37°30'01.9"N 126°51'58.7"E	-	RNAV 1	-
002	TF	UP050	-	171 (162.4)	6.6	-	-6 000	-	37°23'42.2"N 126°54'29.3"E	-	RNAV 1	-
003	TF	ZD080	-	147 (137.9)	13.4	-	@8 000	-	37°13'46.2"N 127°05'43.1"E	-	RNAV 1	-
004	TF	ZD100	-	147 (138.0)	7.1	-	+10 000	-	37°08'27.2"N 127°11'42.1"E	-	RNAV 1	-
005	TF	ZG130	-	166 (157.8)	10.2	-	-13 000	-	36°59'01.9"N 127°16'29.6"E	-	RNAV 1	-
006	TF	OSPOT	-	167 (157.8)	9.4	-	+FL 145	-	36°50'18.1"N 127°20'54.9"E	-	RNAV 1	-

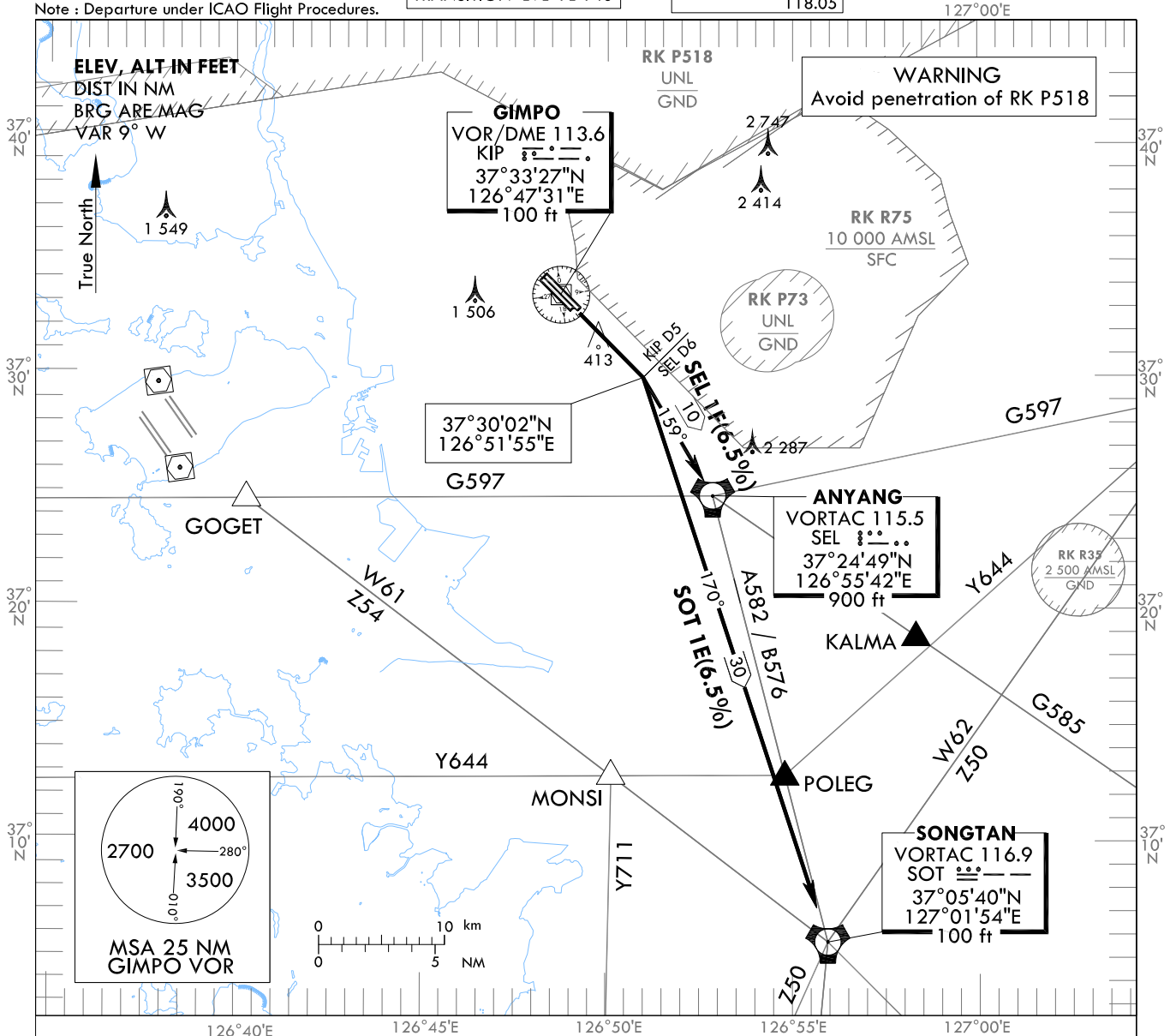
STANDARD DEPARTURE CHART
INSTRUMENT (SID) - ICAO

TRANSITION ALT 14 000
TRANSITION LVL FL 140

SEOUL DEP	125.15
	121.4
	124.8
GIMPO TWR	118.1
	118.05

SEOUL/Gimpo Intl(RKSS)
RWY 14L/R
SEL 1F, SOT 1E

Note : Departure under ICAO Flight Procedures.



GENERAL INFORMATION

1. 6.5% CG necessary for Airspace and ATC purpose and 4.4% for avoiding OBST.
2. If unable to comply with flight restrictions, advise ATC well before departure.
3. Stepped climb : Due to interaction with other routes.

SEL(ANYANG) ONE FOXTROT DEPARTURE :

TAKE OFF RWY 14 L/R : Direct R 144 KIP/D5(if KIP not available, climb on runway HDG) turn right to intercept R 339 SEL and proceed to SEL Cross SEL at or above 4 000 ft.
Maintain 6 000 ft until instructed by ATC.
- For airway B576 or A582, cross 4 DME south of SEL at or above 5 000 ft
SOT at or above 11 000 ft, 8 DME south of SOT at or above FL 150 unless cleared by ATC.
- For airway G597 cross EGOBA at or above 8 000 ft unless cleared by ATC.

SOT(SONGTAN) ONE ECHO DEPARTURE :

TAKE OFF RWY 14 L/R : Direct R 144 KIP/D5(if KIP not available, climb on runway HDG) turn right to intercept R 350 SOT and proceed to SOT. Maintain 6 000 ft until instructed by ATC.

Change : Information of RK P73.

INTENTIONALLY

LEFT

BLANK

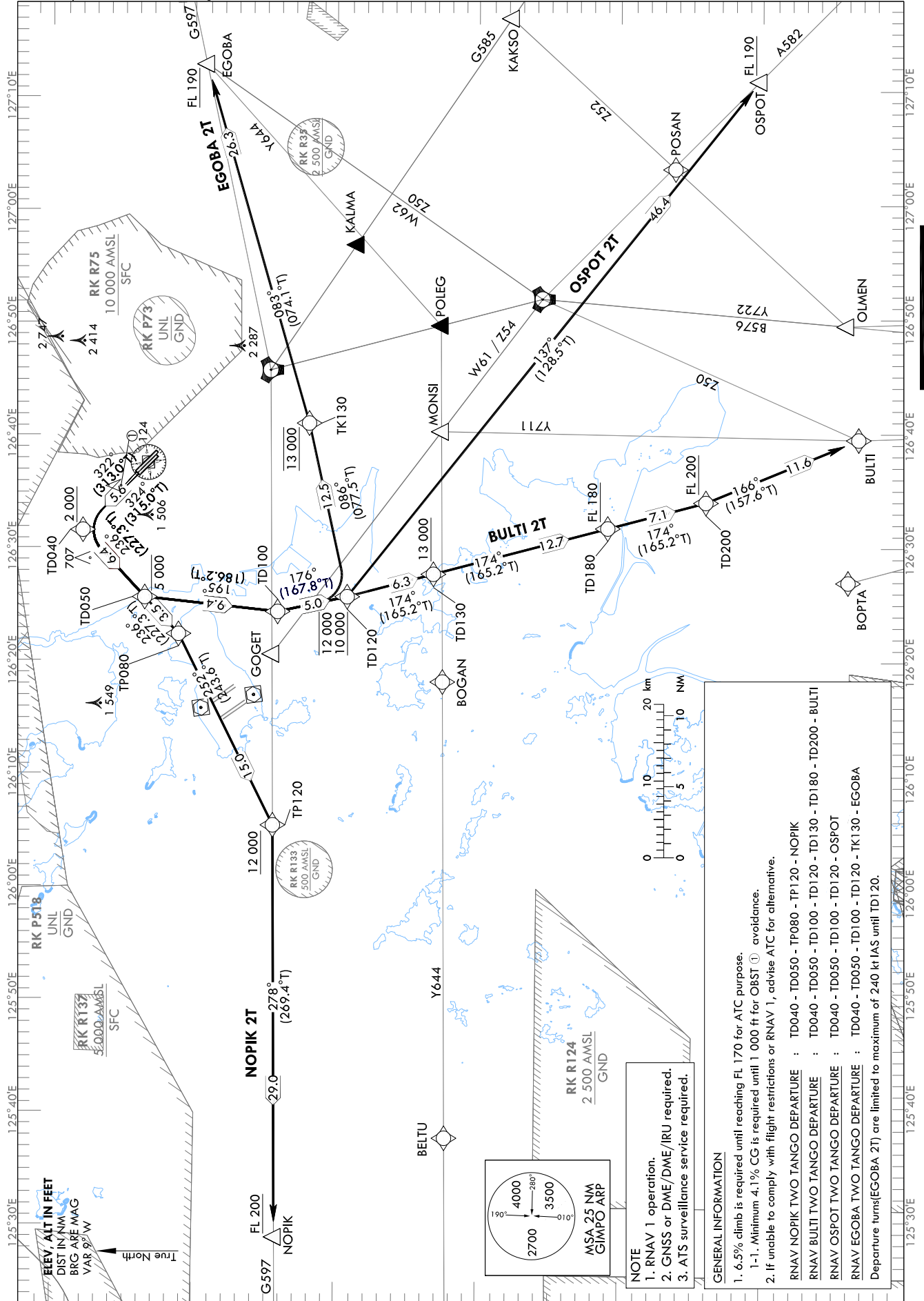
STANDARD DEPARTURE CHART
INSTRUMENT (SID) - ICAO

TRANSITION ALT 14 000
TRANSITION LVL FL 140

SEOUL	DEP	125.15
		121.4
		124.8
GIMPO	TWR	118.1
		118.05

SEOUL/Gimpo Intl(RKSS)
RWY 32L/R
RNAV NOPIK 2T, RNAV BULTI 2T
RNAV OSPOT 2T, RNAV EGOBA 2T

Note : Departure under ICAO Flight Procedures.



Change : Information of RK P73.

NOTE
1. RNAV 1 operation.
2. GNSS or DME/DME/IRU required.
3. ATS surveillance service required.

GENERAL INFORMATION

- 1. 6.5% climb is required until reaching FL 170 for ATC purpose.
 - 1-1. Minimum 4.1% CG is required until 1 000 ft for OBST avoidance.
 - 2. If unable to comply with flight restrictions or RNAV 1, advise ATC for alternative.
- RNAV NOPIK TWO TANGO DEPARTURE : TD040 - TD050 - TP080 - TP120 - NOPIK
 RNAV BULTI TWO TANGO DEPARTURE : TD040 - TD050 - TD100 - TD120 - TD130 - TD180 - TD200 - BULTI
 RNAV OSPOT TWO TANGO DEPARTURE : TD040 - TD050 - TD100 - TD120 - OSPOT
 RNAV EGOBA TWO TANGO DEPARTURE : TD040 - TD050 - TD100 - TD120 - TK130 - EGOBA
 Departure turns(EGOBA 2T) are limited to maximum of 240 kt IAS until TD120.

SEOUL/Gimpo Intl(RKSS)
RWY 32L/R
RNAV NOPIK 2T, RNAV BULTI 2T

AERONAUTICAL DATA TABULATION

Standard Instrument Departure Procedure Coding Tables

RNAV NOPIK 2T												
Serial Number	Path Descriptor	Waypoint Identifier	Fly-over	Course/Track °M(°T)	Distance (NM)	Turn direction	Altitude (ft)	Speed (kt)	Coordinates	VPA/RDH	Navigation specification	Remarks
001	CF	TD040	-	32L-324(315.0) 32R-322(313.0)	5.6	L	+2 000	-	37°38'03.0"N 126°41'33.7"E	-	RNAV 1	-
002	TF	TD050	-	236 (227.3)	6.4	-	-5 000	-	37°33'41.1"N 126°35'37.1"E	-	RNAV 1	-
003	TF	TP080	-	236 (227.3)	3.5	-	-	-	37°31'17.7"N 126°32'22.3"E	-	RNAV 1	-
004	TF	TP120	-	252 (243.6)	1.5	-	+12 000	-	37°24'35.5"N 126°15'29.3"E	-	RNAV 1	-
005	TF	NOPIK	-	278 (269.4)	29.0	-	+FL 200	-	37°24'12.0"N 125°39'05.0"E	-	RNAV 1	-

RNAV BULTI 2T												
Serial Number	Path Descriptor	Waypoint Identifier	Fly-over	Course/Track °M(°T)	Distance (NM)	Turn direction	Altitude (ft)	Speed (kt)	Coordinates	VPA/RDH	Navigation specification	Remarks
001	CF	TD040	-	32L-324(315.0) 32R-322(313.0)	5.6	L	+2 000	-	37°38'03.0"N 126°41'33.7"E	-	RNAV 1	-
002	TF	TD050	-	236 (227.3)	6.4	-	-5 000	-	37°33'41.1"N 126°35'37.1"E	-	RNAV 1	-
003	TF	TD100	-	195 (186.2)	9.4	-	-	-	37°24'18.8"N 126°34'21.2"E	-	RNAV 1	-
004	TF	TD120	-	176 (167.8)	5.0	-	-12 000 +10 000	-	37°19'24.8"N 126°35'40.7"E	-	RNAV 1	-
005	TF	TD130	-	174 (165.2)	6.3	-	+13 000	-	37°13'20.6"N 126°37'40.9"E	-	RNAV 1	-
006	TF	TD180	-	174 (165.2)	12.7	-	+FL 180	-	37°01'03.4"N 126°41'43.1"E	-	RNAV 1	-
007	TF	TD200	-	174 (165.2)	7.1	-	+FL 200	-	36°54'08.6"N 126°43'59.3"E	-	RNAV 1	-
008	TF	BULTI	-	166 (157.6)	11.6	-	-	-	36°43'22.3"N 126°49'29.7"E	-	RNAV 1	-

AERONAUTICAL DATA TABULATION

Standard Instrument Departure Procedure Coding Tables

RNAV OSPOT 2T

Serial Number	Path Descriptor	Waypoint Identifier	Fly-over	Course/Track °M(T)	Distance (NM)	Turn direction	Altitude (ft)	Speed (kt)	Coordinates	VPA/RDH	Navigation specification	Remarks
001	CF	TD040	-	32L-324(315.0) 32R-322(313.0)	5.6	L	+2 000	-	37°38'03.0"N 126°41'33.7"E	-	RNAV 1	-
002	TF	TD050	-	236 (227.3)	6.4	-	-5 000	-	37°33'41.1"N 126°35'37.1"E	-	RNAV 1	-
003	TF	TD100	-	195 (186.2)	9.4	-	-	-	37°24'18.8"N 126°34'21.2"E	-	RNAV 1	-
004	TF	TD120	-	176 (167.8)	5.0	-	-12 000 +10 000	-	37°19'24.8"N 126°35'40.7"E	-	RNAV 1	-
005	TF	OSPOT	-	137 (128.5)	46.4	-	+FL 190	-	36°50'18.1"N 127°20'54.9"E	-	RNAV 1	-

RNAV EGOBA 2T

Serial Number	Path Descriptor	Waypoint Identifier	Fly-over	Course/Track °M(T)	Distance (NM)	Turn direction	Altitude (ft)	Speed (kt)	Coordinates	VPA/RDH	Navigation specification	Remarks
001	CF	TD040	-	32L-324(315.0) 32R-322(313.0)	5.6	L	+2 000	-240	37°38'03.0"N 126°41'33.7"E	-	RNAV 1	-
002	TF	TD050	-	236 (227.3)	6.4	-	-5 000	-240	37°33'41.1"N 126°35'37.1"E	-	RNAV 1	-
003	TF	TD100	-	195 (186.2)	9.4	-	-	-240	37°24'18.8"N 126°34'21.2"E	-	RNAV 1	-
004	TF	TD120	-	176 (167.8)	5.0	-	-12 000 +10 000	-240	37°19'24.8"N 126°35'40.7"E	-	RNAV 1	-
005	TF	TK130	-	086 (077.5)	12.5	-	@13 000	-	37°22'05.9"N 126°51'00.0"E	-	RNAV 1	-
006	TF	EGOBA	-	083 (074.1)	26.3	-	+FL 190	-	37°29'14.7"N 127°22'45.9"E	-	RNAV 1	-

Change : Information of standard instrument departure procedure for RWY 32L/R.

INTENTIONALLY

LEFT

BLANK

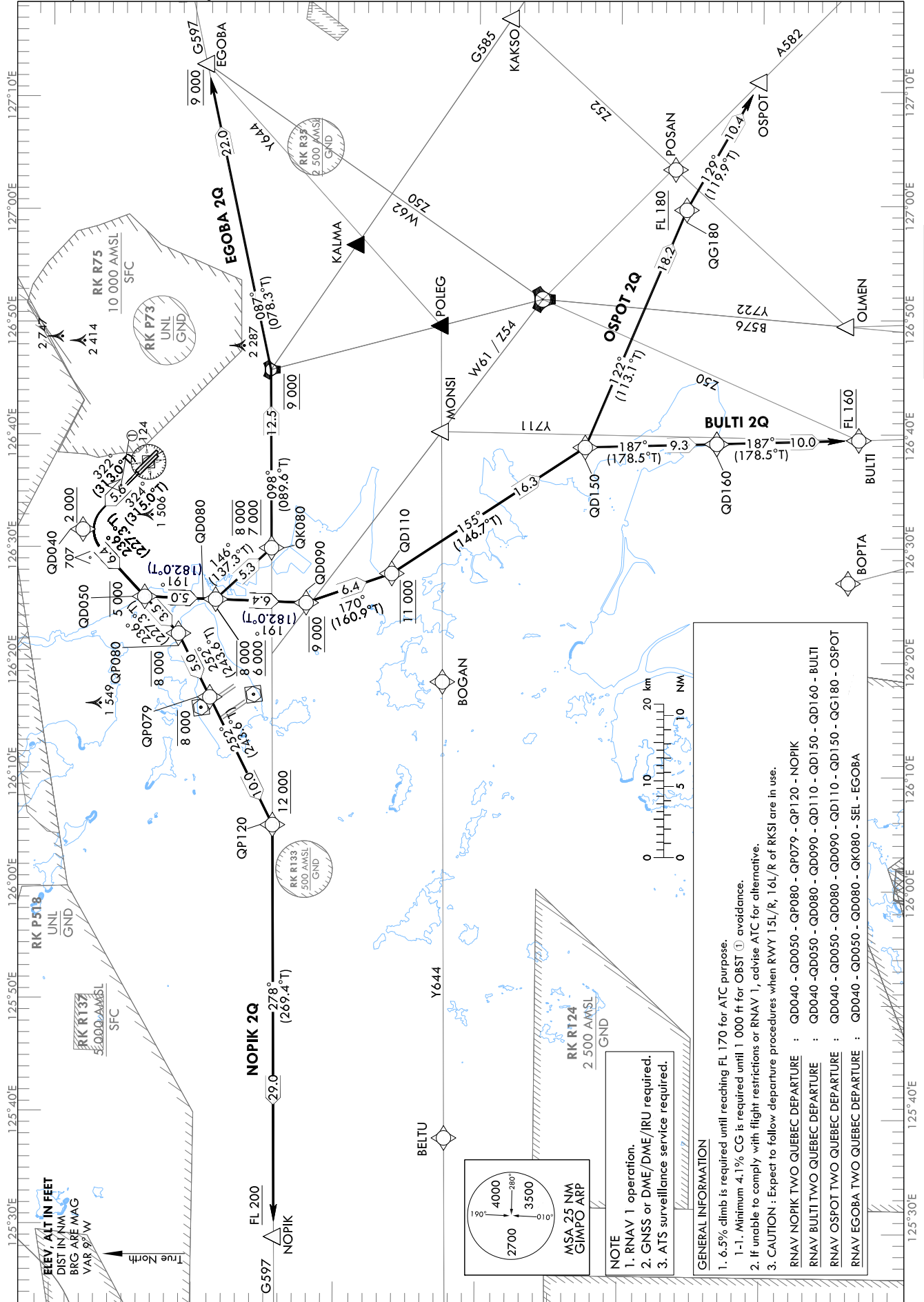
STANDARD DEPARTURE CHART
INSTRUMENT (SID) - ICAO

TRANSITION ALT 14 000
TRANSITION LVL FL 140

SEOUL	DEP	125.15
		121.4
		124.8
GIMPO	TWR	118.1
		118.05

SEOUL/Gimpo Intl(RKSS)
RWY 32L/R
RNAV NOPIK 2Q, RNAV BULTI 2Q
RNAV OSPOT 2Q, RNAV EGOBA 2Q

Note : Departure under ICAO Flight Procedures.



SEOUL/Gimpo Intl(RKSS)
RWY 32L/R
RNAV NOPIK 2Q, RNAV BULTI 2Q

AERONAUTICAL DATA TABULATION

Standard Instrument Departure Procedure Coding Tables

RNAV NOPIK 2Q

Serial Number	Path Descriptor	Waypoint Identifier	Fly-over	Course/Track °M(°T)	Distance (NM)	Turn direction	Altitude (ft)	Speed (kt)	Coordinates	VPA/RDH	Navigation specification	Remarks
001	CF	GD040	-	32L-324(315.0) 32R-322(313.0)	5.6	L	+2 000	-	37°38'03.0"N 126°41'33.7"E	-	RNAV 1	-
002	TF	GD050	-	236 (227.3)	6.4	-	-5 000	-	37°33'41.1"N 126°35'37.1"E	-	RNAV 1	-
003	TF	QP080	-	236 (227.3)	3.5	-	-8 000	-	37°31'17.7"N 126°32'22.3"E	-	RNAV 1	-
004	TF	QP079	-	252 (243.6)	5.0	-	-8 000	-	37°29'04.1"N 126°26'44.7"E	-	RNAV 1	-
005	TF	QP120	-	252 (243.6)	10.0	-	+12 000	-	37°24'35.5"N 126°15'29.3"E	-	RNAV 1	-
006	TF	NOPIK	-	278 (269.4)	29.0	-	+FL 200	-	37°24'12.0"N 125°39'05.0"E	-	RNAV 1	-

RNAV BULTI 2Q

Serial Number	Path Descriptor	Waypoint Identifier	Fly-over	Course/Track °M(°T)	Distance (NM)	Turn direction	Altitude (ft)	Speed (kt)	Coordinates	VPA/RDH	Navigation specification	Remarks
001	CF	GD040	-	32L-324(315.0) 32R-322(313.0)	5.6	L	+2 000	-	37°38'03.0"N 126°41'33.7"E	-	RNAV 1	-
002	TF	GD050	-	236 (227.3)	6.4	-	-5 000	-	37°33'41.1"N 126°35'37.1"E	-	RNAV 1	-
003	TF	GD080	-	191(182.0)	5.0	-	-8 000 +6 000	-	37°28'41.3"N 126°35'23.9"E	-	RNAV 1	-
004	TF	GD090	-	191(182.0)	6.4	-	@9 000	-	37°22'18.4"N 126°35'07.0"E	-	RNAV 1	-
005	TF	GD110	-	170 (160.9)	6.4	-	@11 000	-	37°16'16.3"N 126°37'43.8"E	-	RNAV 1	-
006	TF	GD150	-	155 (146.7)	16.3	-	-	-	37°02'39.6"N 126°48'52.6"E	-	RNAV 1	-
007	TF	GD160	-	187 (178.5)	9.3	-	-	-	36°53'22.9"N 126°49'10.5"E	-	RNAV 1	-
008	TF	BULTI	-	187 (178.5)	10.0	-	@FL 160	-	36°43'22.3"N 126°49'29.7"E	-	RNAV 1	-

SEOUL/Gimpo Intl(RKSS)

RWY 32L/R

RNAV OSPOT 2Q, RNAV EGOBA 2Q

AERONAUTICAL DATA TABULATION

Standard Instrument Departure Procedure Coding Tables

Serial Number	Path Descriptor	Waypoint Identifier	Fly-over	Course/Track °M(T)	Distance (NM)	Turn direction	Altitude (ft)	Speed (kt)	Coordinates	VPA/RDH	Navigation specification	Remarks
001	CF	GD040	-	32L-324(315.0) 32R-322(313.0)	5.6	L	+2 000	-	37°38'03.0"N 126°41'33.7"E	-	RNAV 1	-
002	TF	GD050	-	236 (227.3)	6.4	-	-5 000	-	37°33'41.1"N 126°35'37.1"E	-	RNAV 1	-
003	TF	GD080	-	191 (182.0)	5.0	-	-8 000 +6 000	-	37°28'41.3"N 126°35'23.9"E	-	RNAV 1	-
004	TF	GD090	-	191 (182.0)	6.4	-	@9 000	-	37°22'18.4"N 126°35'07.0"E	-	RNAV 1	-
005	TF	GD110	-	170 (166.9)	6.4	-	@11 000	-	37°16'16.3"N 126°37'43.8"E	-	RNAV 1	-
006	TF	GD150	-	155 (146.7)	16.3	-	-	-	37°02'39.6"N 126°48'52.6"E	-	RNAV 1	-
007	TF	QG180	-	122 (113.1)	18.2	-	+FL 180	-	36°55'29.2"N 127°09'43.6"E	-	RNAV 1	-
008	TF	OSPOT	-	129 (119.9)	10.4	-	-	-	36°50'18.1"N 127°20'54.9"E	-	RNAV 1	-

Serial Number	Path Descriptor	Waypoint Identifier	Fly-over	Course/Track °M(T)	Distance (NM)	Turn direction	Altitude (ft)	Speed (kt)	Coordinates	VPA/RDH	Navigation specification	Remarks
001	CF	GD040	-	32L-324(315.0) 32R-322(313.0)	5.6	L	+2 000	-	37°38'03.0"N 126°41'33.7"E	-	RNAV 1	-
002	TF	GD050	-	236 (227.3)	6.4	-	-5 000	-	37°33'41.1"N 126°35'37.1"E	-	RNAV 1	-
003	TF	GD080	-	191 (182.0)	5.0	-	-8 000 +6 000	-	37°28'41.3"N 126°35'23.9"E	-	RNAV 1	-
004	TF	GK080	-	146 (137.3)	5.3	-	-8 000 +7 000	-	37°24'45.2"N 126°39'57.2"E	-	RNAV 1	-
005	TF	SEL	-	098 (089.6)	12.5	-	@9 000	-	37°24'49.0"N 126°55'42.1"E	-	RNAV 1	-
006	TF	EGOBA	-	087 (078.3)	22.0	-	@9 000	-	37°29'14.7"N 127°22'45.9"E	-	RNAV 1	-

Change : Information of standard instrument departure procedure for RWY 32L/R.

INTENTIONALLY

LEFT

BLANK

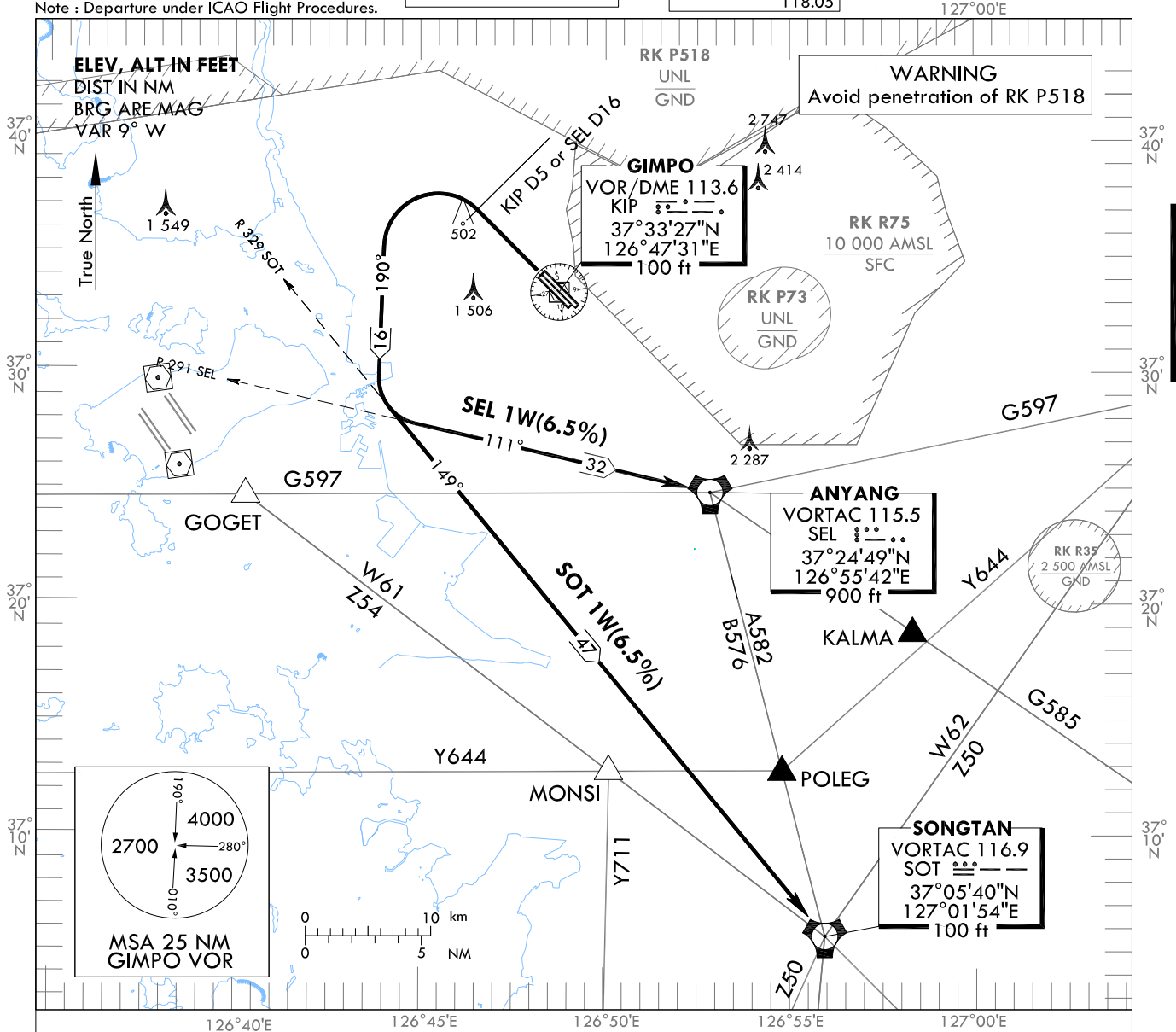
STANDARD DEPARTURE CHART
INSTRUMENT (SID) - ICAO

TRANSITION ALT 14 000
TRANSITION LVL FL 140

SEOUL DEP	125.15
	121.4
	124.8
GIMPO TWR	118.1
	118.05

SEOUL/Gimpo Intl(RKSS)
RWY 32L/R
SEL 1W, SOT 1W

Note : Departure under ICAO Flight Procedures.



GENERAL INFORMATION

1. 6.5% CG necessary for Airspace and ATC purpose and 4.8% for avoiding OBST.
2. If unable to comply with flight restrictions, advise ATC well before departure.
3. Stepped climb : Due to interaction with other routes. Do not climb above 4 000 ft unless cleared by ATC.
4. First turn limited maximum 250 kt IAS.
5. All of turns are based on 25 degrees bank angle due to airspace restricton.

SEL(ANYANG) ONE WHISKY DEPARTURE :

Climb on R 324 KIP(or RWY HDG) until KIP D5(or SEL D16),
then turn left HDG 190° to intercept R 291 SEL then proceed to SEL.
Maintain 4 000 ft until instructed by ATC.

SOT(SONGTAN) ONE WHISKY DEPARTURE :

Climb on R 324 KIP(or RWY HDG) until KIP D5(or SEL D16),
then turn left HDG 190° to intercept R 329 SOT then proceed to SOT.
Maintain 4 000 ft until instructed by ATC.

Change : Information of RK P73.

INTENTIONALLY

LEFT

BLANK

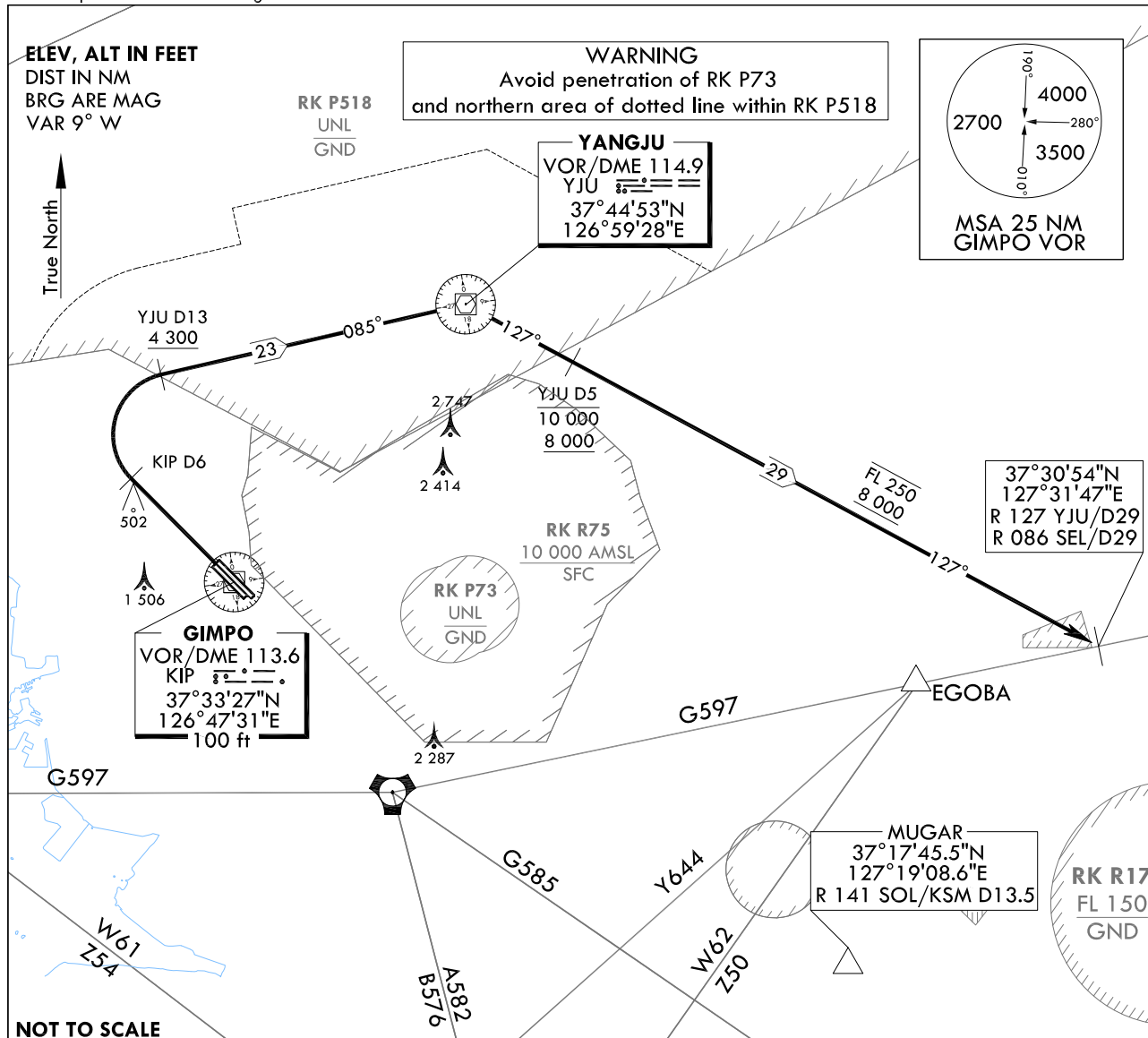
**STANDARD DEPARTURE CHART
INSTRUMENT (SID) - ICAO**

TRANSITION ALT 14 000
TRANSITION LVL FL 140

SEOUL DEP	125.15
	121.4
	124.8
GIMPO TWR	118.1
	118.05

SEOUL/Gimpo Intl(RKSS)
RWY 32L/R
KARBU 1W

Note : Departure under ICAO Flight Procedures.



NOTE

1. Minimum CG 7% to 4 300 ft for noise abatement, then resume normal CG.
2. Request of this procedure shall be made at least 10 minutes prior to take-off.
3. Operating Hours
 - SAT, SUN and Holiday : 0300-1200 UTC
 - Other days : 0700-1200 UTC

KARBU ONE WHISKY DEPARTURE :

Climb on R 324 KIP to D6, then turn right to intercept R 265 YJU/D13, then proceed to YJU.
At YJU, turn right to track outbound R 127 YJU until joining G597.
Cross R 265 YJU/D13 at or above 4 300 ft, R 127 YJU/D5 between 8 000 ft and 10 000 ft,
then at or below FL 250 until joining G597.

Change : Establishment of fix(MUGAR).

INTENTIONALLY

LEFT

BLANK